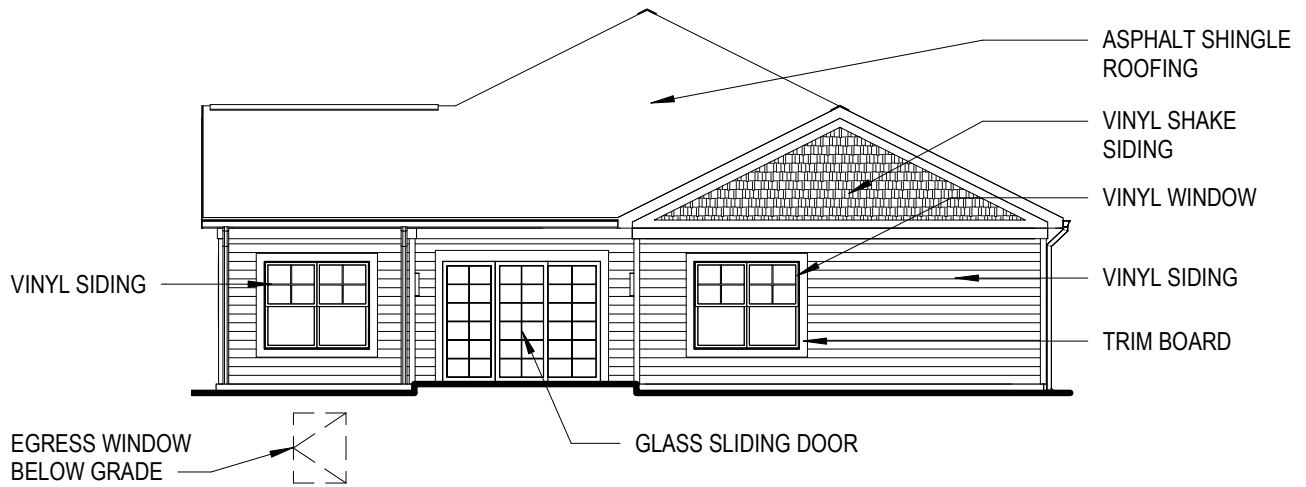


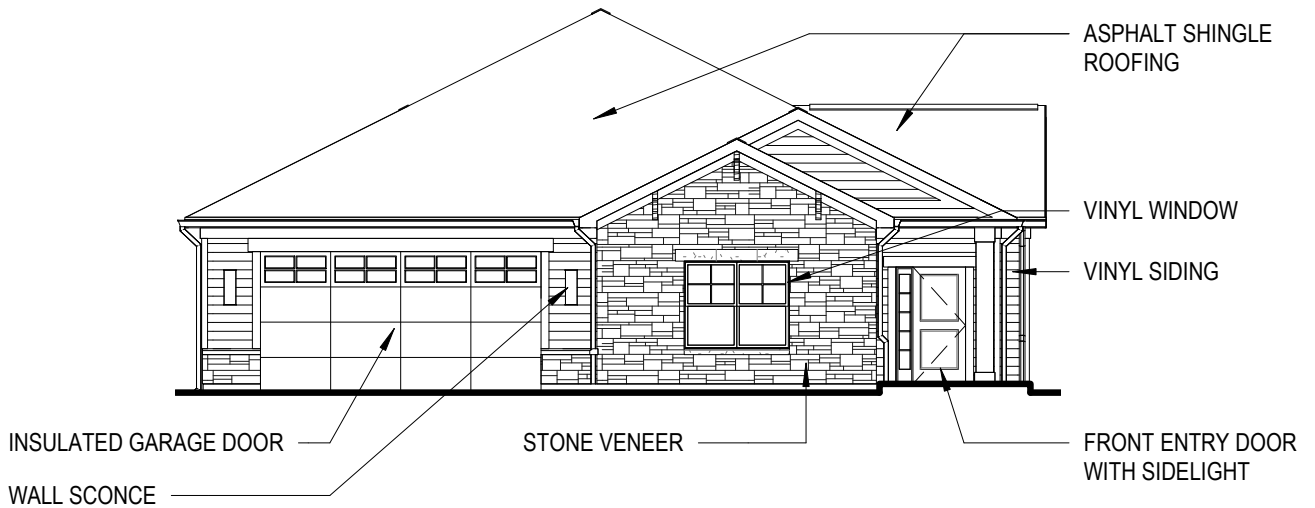
The following units shall have an additional side elevation finished with the same 2' stone veneer finish as shown on the front elevation:

- Unit 1: North (side) elevation
- Unit 5: West (side) elevation
- Unit 6: North (side) elevation
- Unit 12: Northwest (side) elevation
- Unit 13: Northeast (side) elevation
- Unit 20: North (side) elevation



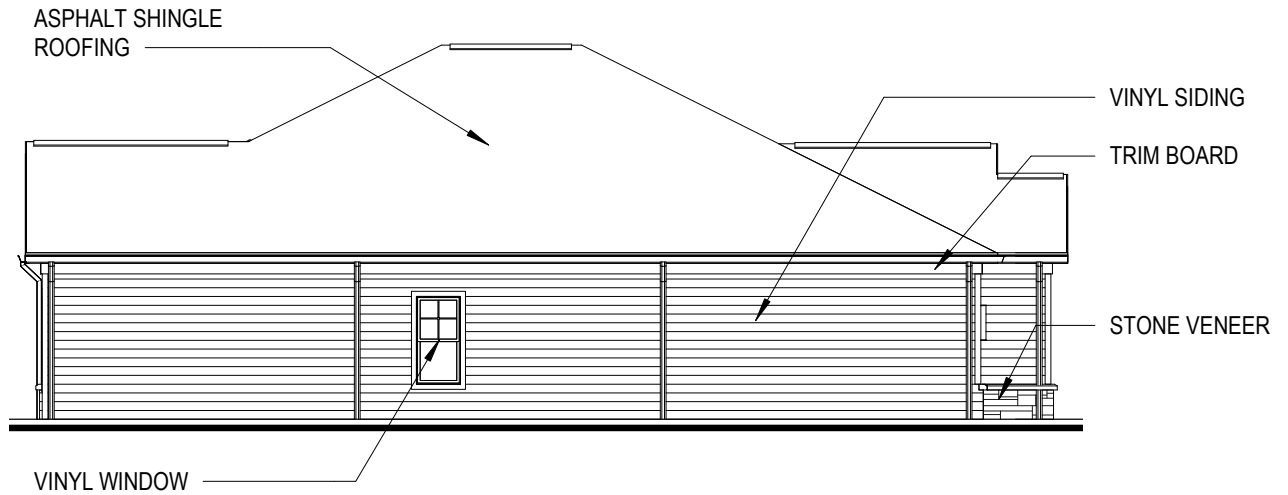
REAR ELEVATION - C

3/32" = 1'-0"



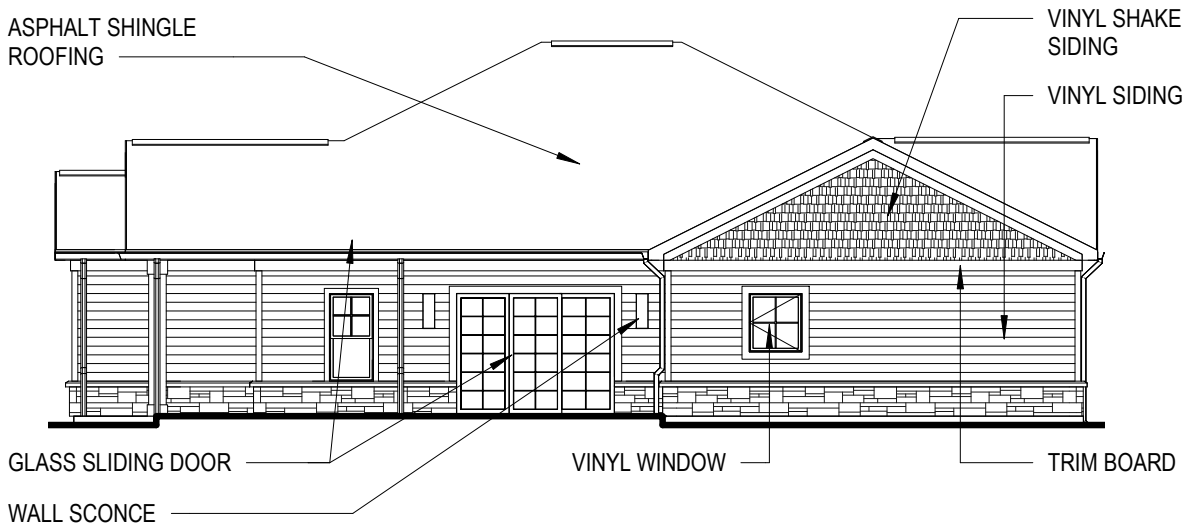
FRONT ELEVATION - C

3/32" = 1'-0"



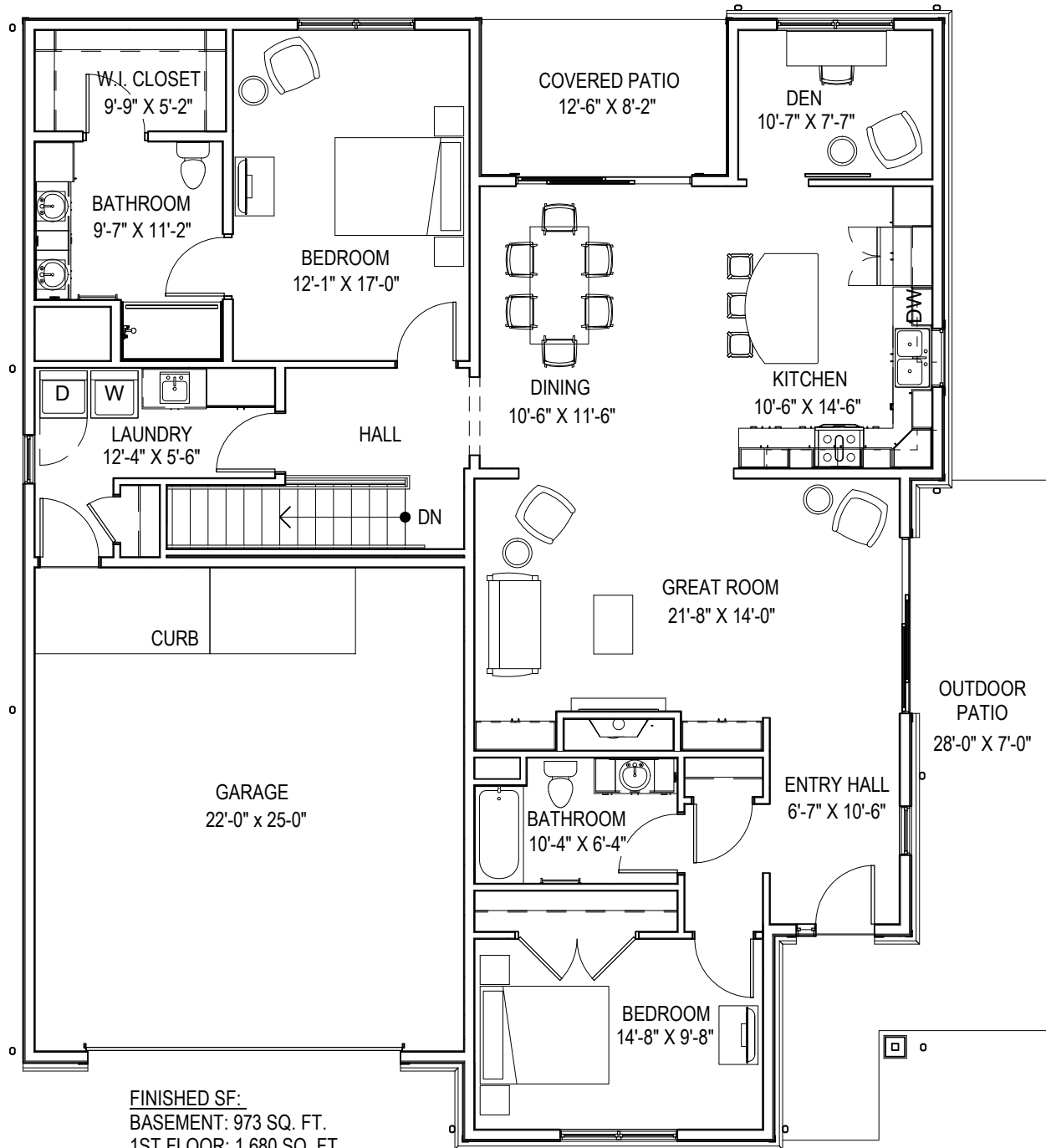
SIDE ELEVATION - C

3/32" = 1'-0"



SIDE ELEVATION - C

3/32" = 1'-0"



FINISHED SF:
 BASEMENT: 973 SQ. FT.
 1ST FLOOR: 1,680 SQ. FT.
 TOTAL
 2,653 SQ. FT.

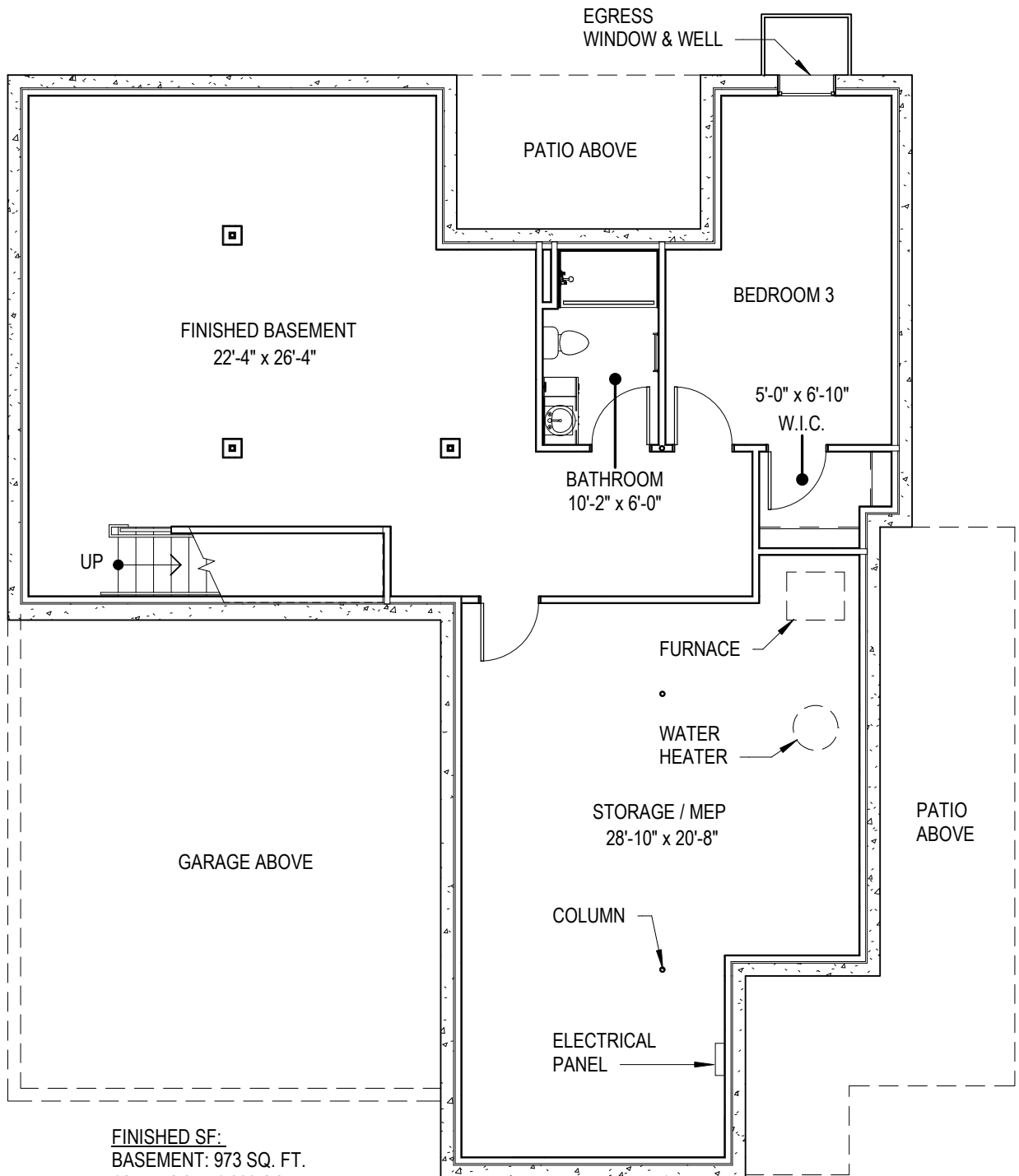
UNFINISHED SF:
 BASEMENT: 534 SQ. FT.

*SIZES AND DIMENSIONS
 ARE APPROXIMATE.
 ACTUAL MAY VARY



COTTAGE C - THE VIRGINIA
 THE COTTAGES AT MEADOW VALLEY
 TRAVERSE CITY, MICHIGAN





FINISHED SF:
 BASEMENT: 973 SQ. FT.
 1ST FLOOR: 1,680 SQ. FT.
 TOTAL
 2,653 SQ. FT.

UNFINISHED SF:
 BASEMENT: 534 SQ. FT.

*SIZES AND DIMENSIONS
 ARE APPROXIMATE.
 ACTUAL MAY VARY